

## MARCO NATURE MODEL SHOWER TRAY TECHNICAL SHEET - CHARGE DENSITY 1,4

**COMPOSITION:** Polyester resin, carbonates and the latest fillers.

**OUTER CASTING:** Highly resistant anti-bacterial gel-coat.

**TEXTURE:** Class 3 natural slate.



Non-porous



Easy to transport



Anti-slipping



Easy to install



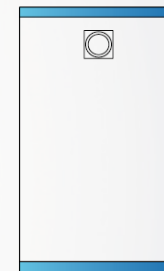
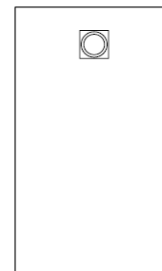
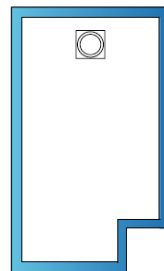
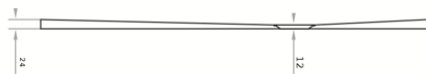
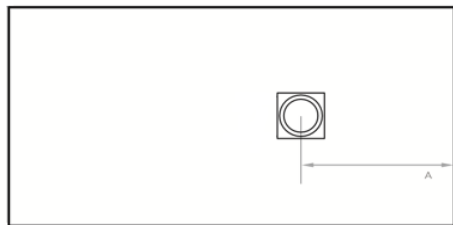
Easy to clean



Anti-bacterial

### *DIMENSIONS Expressed in Centimeters*

Thickness	Length	Width	Drain (A)	Width	Drain (A)	Width	Drain (A)
2,4	80	80	<b>MIDDLE</b>	-	-	-	-
2,4	90	70-75-80	<b>30</b>	90-100	<b>30</b>	-	-
2,4	100	70-75-80	<b>30</b>	90-100	<b>30 - MIDDLE</b>	-	-
2,6	120	70-75-80	<b>35</b>	90-100	<b>35</b>	120	<b>MIDDLE</b>
2,6	140	70-75-80	<b>40</b>	90-100	<b>40</b>	-	-
2,8	150	70-80	<b>40</b>	90-100	<b>40</b>	-	-
2,8	160	70-75-80	<b>45</b>	90-100	<b>45</b>	120	<b>MIDDLE</b>
2,8	170	70-80	<b>45</b>	90-100	<b>45</b>	-	-
3	180	70-75-80	<b>50</b>	90-100	<b>50</b>	-	-
3	190	70-80	<b>50</b>	90-100	<b>50</b>	-	-
3	200	70-80	<b>50</b>	90-100	<b>50</b>	-	-
3	220	70-80	<b>MIDDLE</b>	90-100	<b>MIDDLE</b>	120	<b>MIDDLE</b>



\* Aproximate measurements and weight.

## MARCO NATURE MODEL SHOWER TRAY TECHNICAL SHEET - CHARGE DENSITY 1,4

### MEASUREMENTS AND WEIGHT (Kg)

Length	WIDTH					Amount
	70	80	90	100	120	Palet
90	22	24	28	31		15 UNI.
100	23	26	29	32	-	15 UNI.
120	28	31	35	38	46	15 UNI.
140	33	38	42	47	-	12 UNI.
150	38	43	48	53		12 UNI.
160	40	45	51	57	68	12 UNI.
170	43	49	54	60	-	10 UNI.
180	45	51	57	64	-	10 UNI.
190	50	57	64	71	-	10 UNI.
200	52	61	67	74	-	10 UNI.
220	57	65	73	82	98	10 UNI.

### PACKING DIMENTIONS AND M3

Length	70 CM		80 CM		90 CM		100 CM		120 CM	
	Measurement	m3	Measurement	m3	Measurement	m3	Measurement	m3	Measurement	m3
100	107x77x6,5	0,053	107x87x6,5	0,065	107x97x6,5	0,067	107x107x6,5	0,074	-	-
120	127x77x6,5	0,063	127x87x6,5	0,071	127x97x6,5	0,080	127x107x6,5	0,088	127x127x6,5	0,104
140	147x77x6,5	0,073	147x87x6,5	0,083	147x97x6,5	0,092	147x107x6,5	0,102	-	-
150	157x77x6,5	0,078	157x87x6,5	0,088	157x97x6,5	0,098	157x107x6,5	0,109	-	-
160	167x77x6,5	0,083	167x87x6,5	0,094	167x97x6,5	0,105	167x107x6,5	0,116	167x127x6,5	0,137
170	177x77x6,5	0,088	177x87x6,5	0,100	177x97x6,5	0,112	177x107x6,5	0,123	-	-
180	187x77x6,5	0,093	187x87x6,5	0,106	187x97x6,5	0,118	187x107x6,5	0,130	-	-
190	197x77x6,5	0,098	197x87x6,5	0,111	197x97x6,5	0,124	197x107x6,5	0,137	-	-
200	207x77x6,5	0,103	207x87x6,5	0,117	207x97x6,5	0,117	207x107x6,5	0,144	-	-
220	227x77x6,5	0,110	227x87x6,5	0,128	227x97x6,5	0,143	-	-	227x127x6,5	0,187

\* Approximate measurements and weight.